



African elephant



Tools

Scissors
Paste, or woodwork glue
Stencil pen, or bodkin
Ruler

Notation Key

— Scissors line
..... Mountain fold
- - - Valley fold
+ Glue spot
A1, B1 Parts No.

- ◆ The Assembly instructions are divided into three blocks:
A (head), B (body), C (legs).
Follow the instructions for each block to assemble your african elephant.

- ◆ ★ marks a basic assembly technique that remains the same regardless of the part. Instructions are printed only for the first instance.

<Caution>

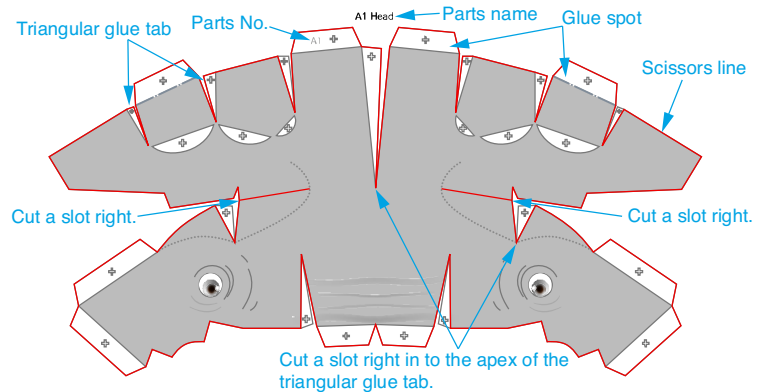
- ✂ Keep scissors and glue away from small children.
- ✂ Be careful not to cut your fingers when using scissors.

A Assemble the head

Use pattern: Page2 / Page3 / Page4.

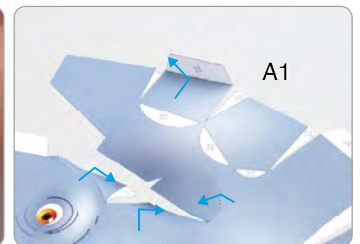
- ① Cut out A1 by cutting along the lines.

- ★ Cut along the line marked —.



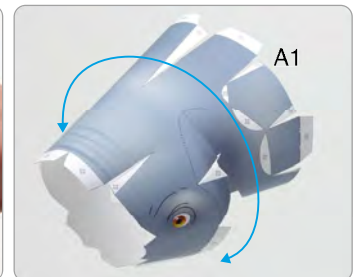
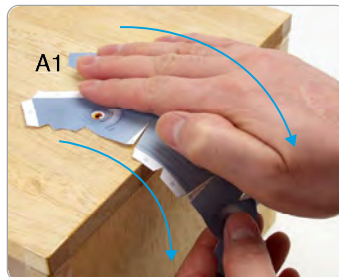
- ② Make a mountain fold and valley fold on A1.

- ★ Trace along the mountain fold line and valley fold line with a pencil, scoring it to make it easier to fold.



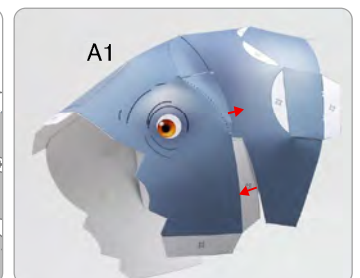
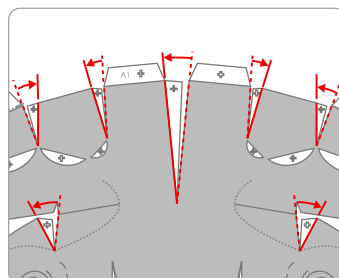
- ③ The parts will be easier to assemble if curled.

- ★ Using the photo as a guide, apply pressure with the palm of your hand, gradually curling the paper in the direction of the arrow.

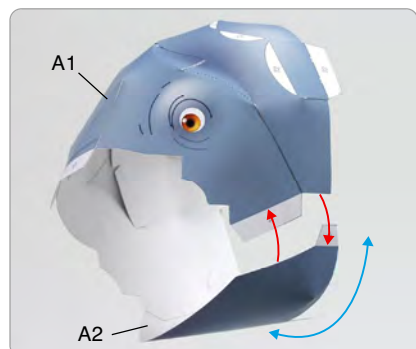


- ④ Add a slight curl to A1 when attaching it.

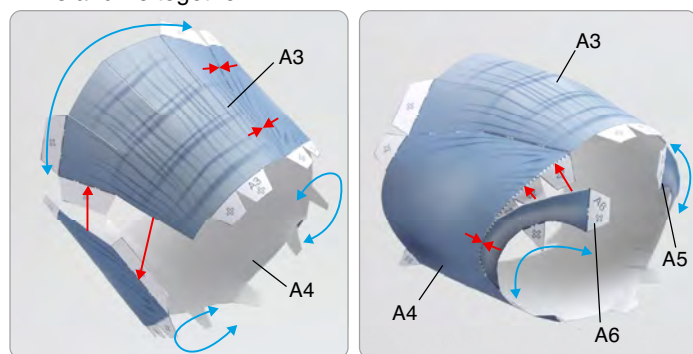
- ★ Attach the triangular glue tabs so that the front side becomes convex.
- ★ Using the photo as a guide, attach in the direction of the arrow.



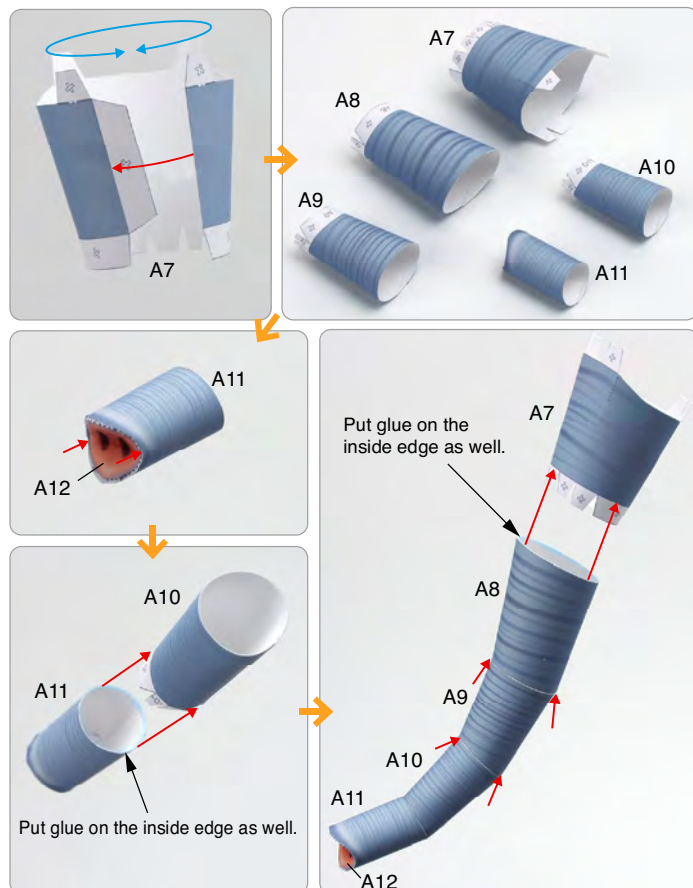
⑤ Attach A1 and A2 together.



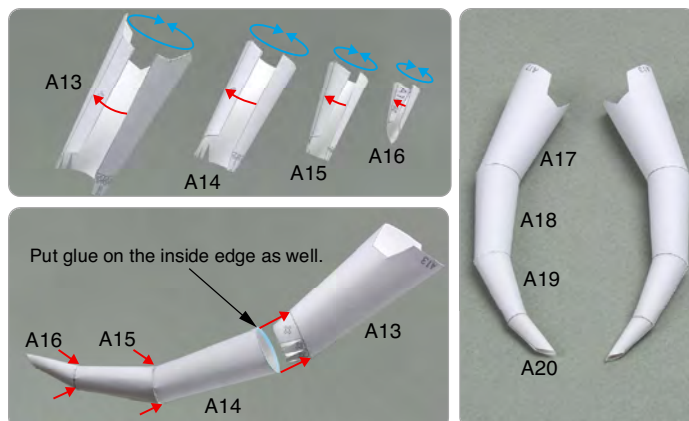
⑥ Assemble A3 and A4 together, and then assemble A5 and A6 together.



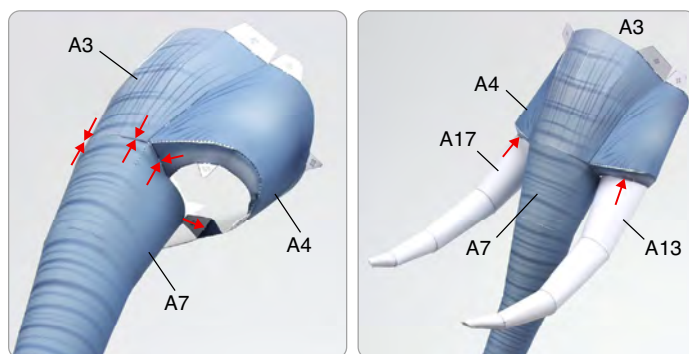
⑦ Assemble A7 through A11 and attach A12 through A7 together.



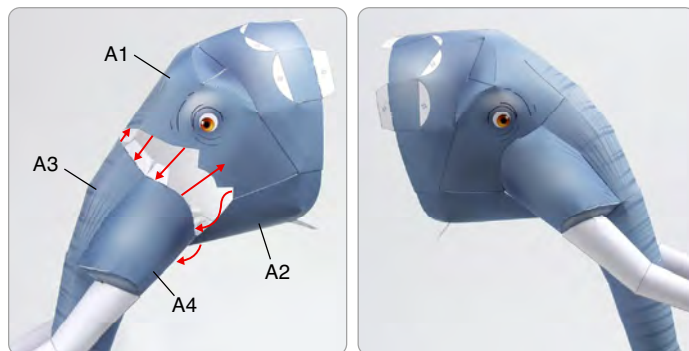
⑧ Assemble A13 through A16 and attach A16 through A13 together. Attach A17 through A20 in the same way.



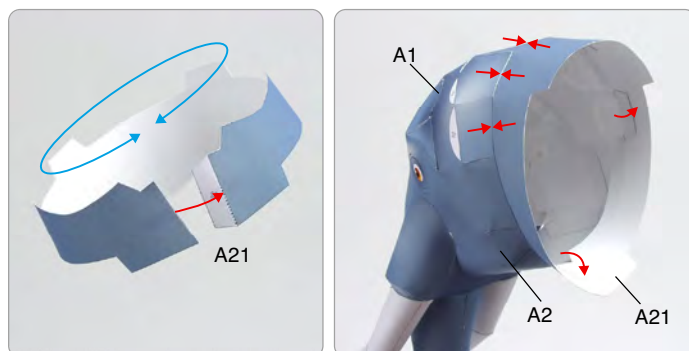
⑨ Assemble A3, A4 and A7. Next, attach the tusk to them.



⑩ Attach the head and nose together.



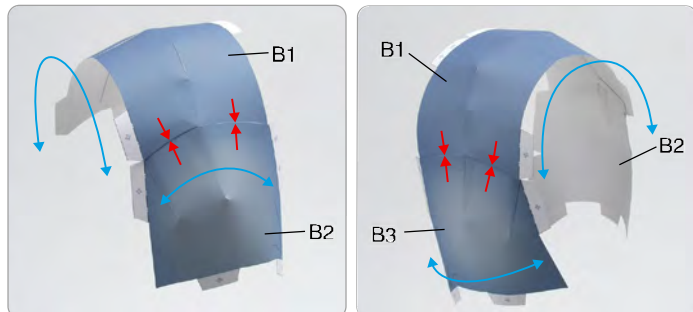
⑪ Assemble A21 and attach it to the head to complete the head.



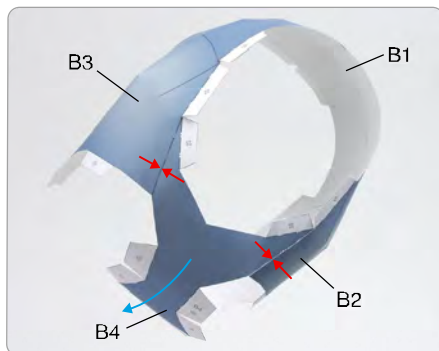
B Assemble the body

Use pattern: Page5 / Page6 / Page7 / Page8 / Page9.

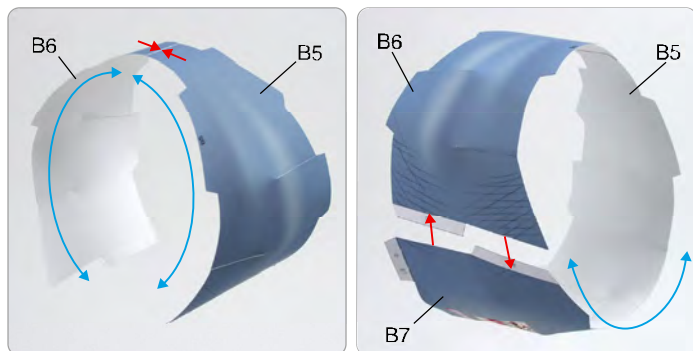
① Attach B2 and B3 to B1.



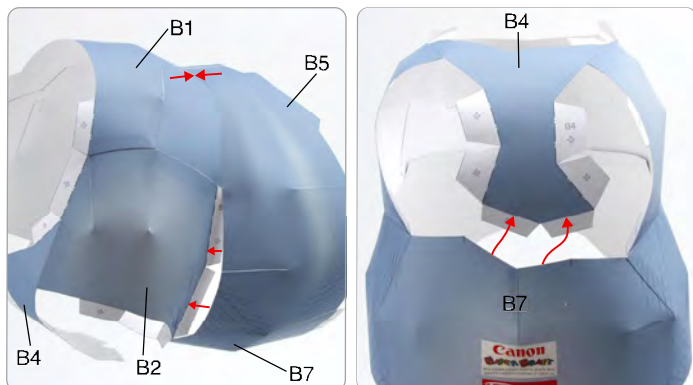
② Attach B4 to B2 and B3.



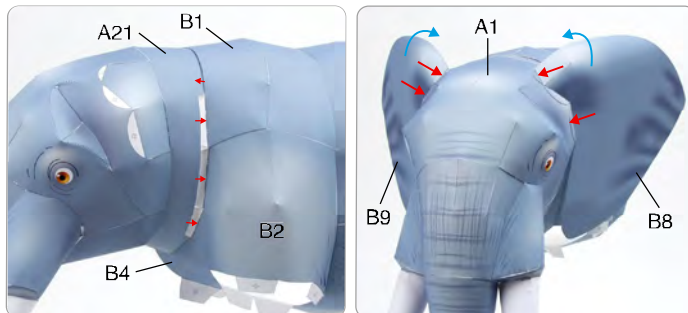
③ Assemble B6 and B7, and attach B7 to them.



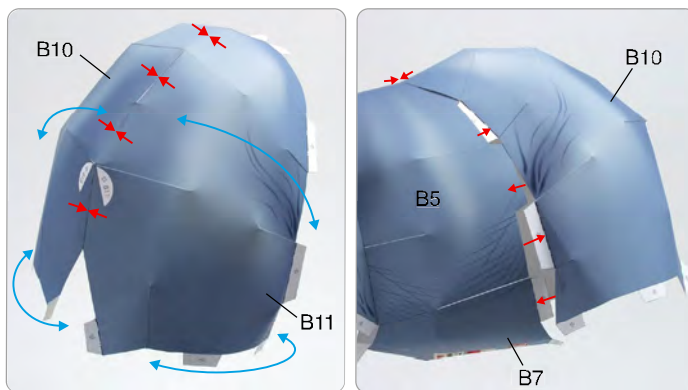
④ Assemble B1, B2, B3 and B4 and B5, B6 and B7.



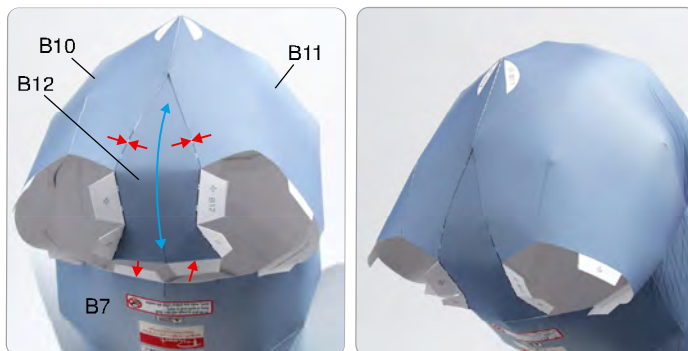
⑤ Assemble the head and body together, and attach B8 and B9 to the head.



⑥ Assemble B10 to B11 and attach it to the body.



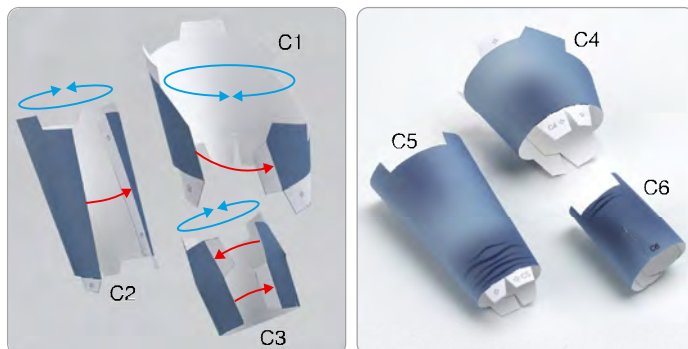
⑦ Attach B12 to the body to complete the body.



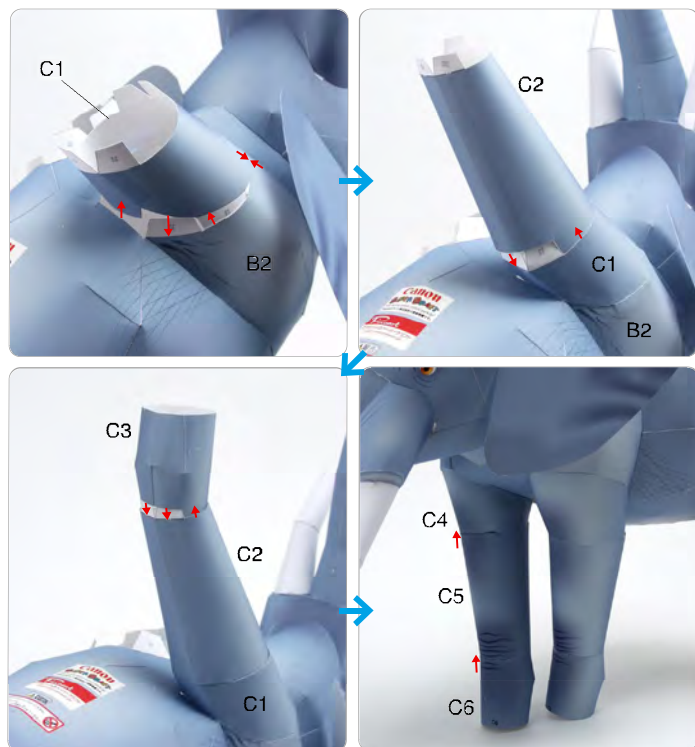
C Assemble the legs

Use pattern: Page10 / Page11 / Page12 / Page13.

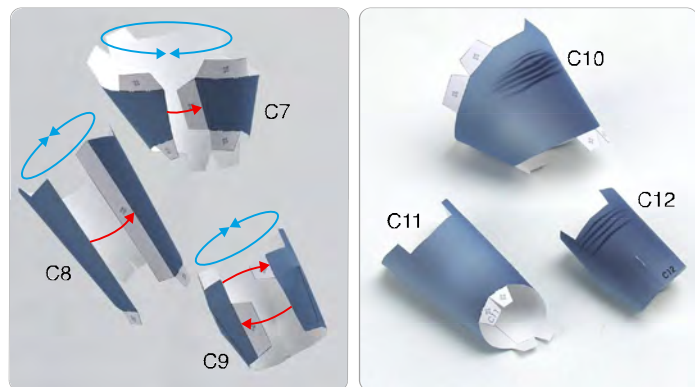
① Assemble C1, C2, C3, C4, C5 and C6.



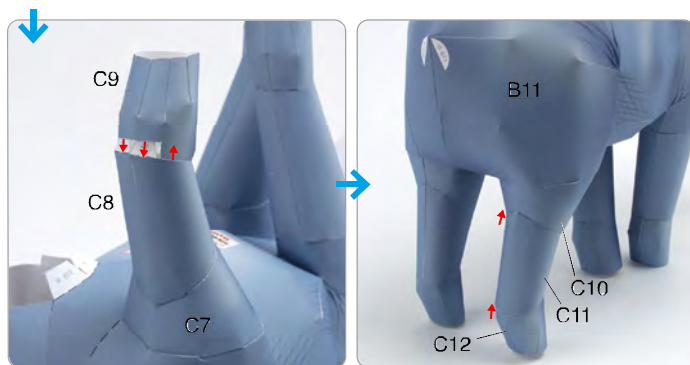
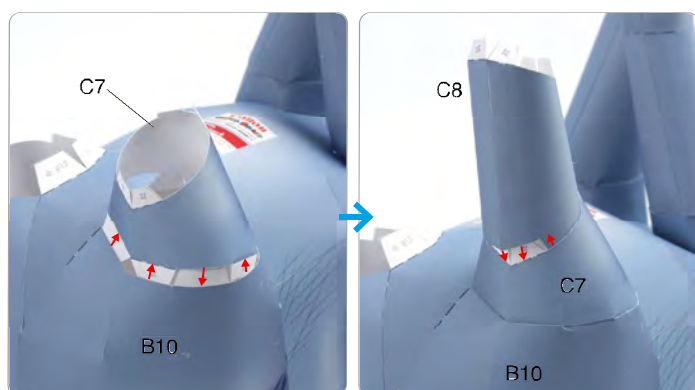
- ② Attach C1, C2 and C3 to the body in order. In the same way, attach C4, C5 and C6 to the body in order.



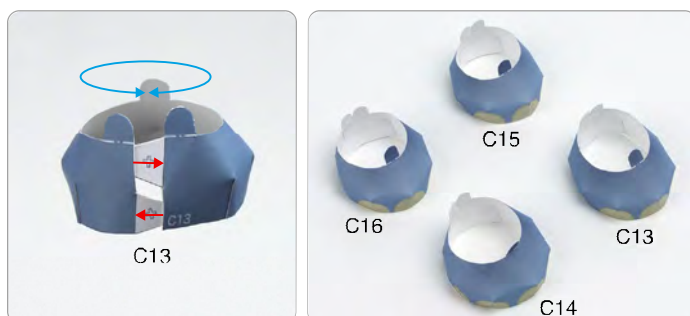
- ③ Assemble C7, C8, C9, C10, C11 and C12.



- ④ Attach C7, C8 and C9 to the body in order. In the same way, attach C10, C11 and C12 to the body in order.



- ⑤ Assemble C13, C14, C15 and C16.



- ⑥ Without adding glue, fit the feet to the legs so that they stand on the ground. Next, attach them together with glue.



- ⑦ Glue C17 to the body, and your elephant is complete.





African elephant



Tools

Scissors
Paste, or woodwork glue
Stencil pen, or bodkin
Ruler

Notation Key

——— Scissors line
..... Mountain fold
- - - - - Valley fold
+ Glue spot
A1, B1 Parts No.

- ◆ The Pattern are divided into three blocks:
A (head), B (body), C (legs).
Follow the instructions for each block to assemble your african elephant.

<Caution>

- ✂ Keep scissors and glue away from small children.
- ✂ Be careful not to cut your fingers when using scissors.

- Mammalia Proboscidea Elephantidae
- Length (incl. tail): approx. 6 to 7m (approx. 20 to 23 feet)
- Weight: approx. 5,000 to 7,000kg (approx. 11,000 to 15,400lbs)
- Habitat: African continent, south of the Sahara

The African elephant is the largest land mammal in the world. Its tusks become curved as they grow, and in males they can reach lengths of up to 350cm. Its large, triangular ears are not only perfect for collecting sound, but they are also used for releasing body heat, and elephants spread them out to intimidate other animals.

African elephants usually move in herds of around 10, with the oldest female as leader. Male elephants often leave the herd around the age of 10 years, and lead solitary lives.

Elephants are herbivorous and feed on leaves, branches, tree bark and fruit.

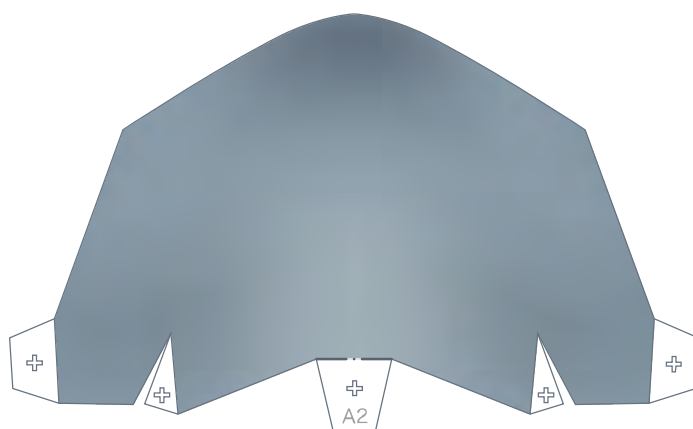
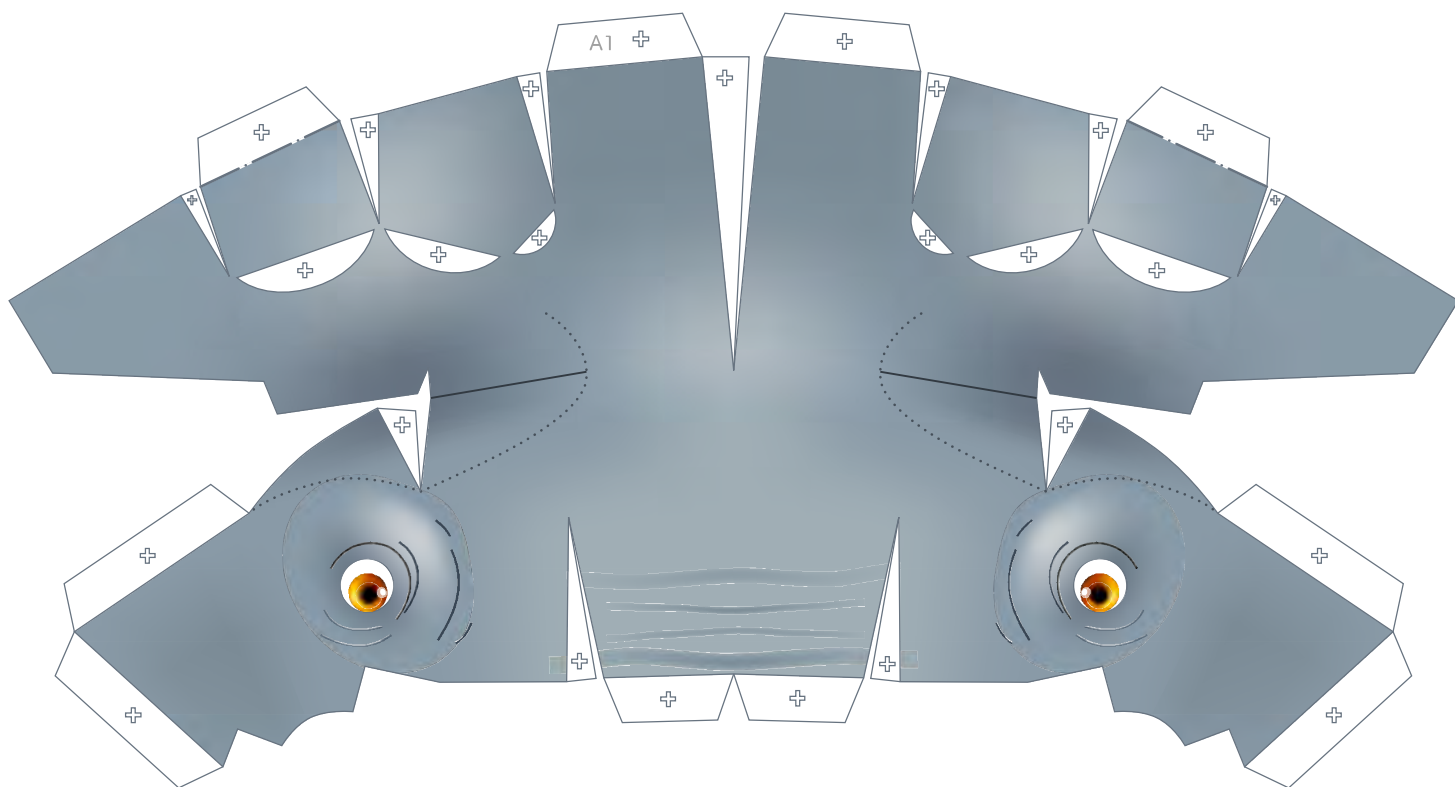




Head parts

Refer to Assembly Instructions: Page1 / Page2.

A1 Head



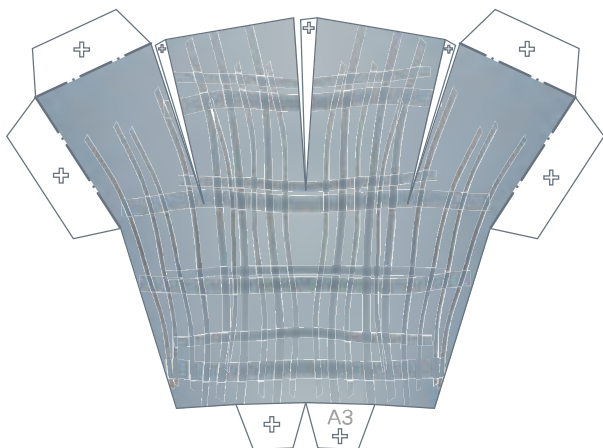
A2 Mouth



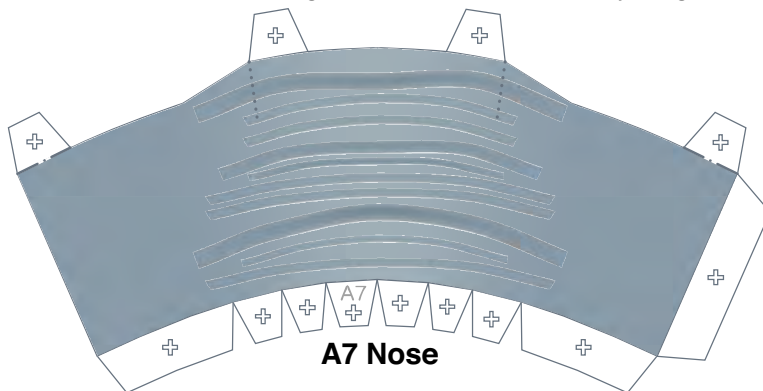
Head parts

Refer to Assembly Instructions: Page2.

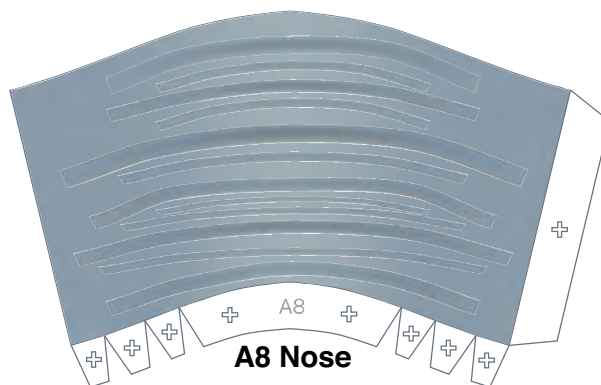
A3 Nose



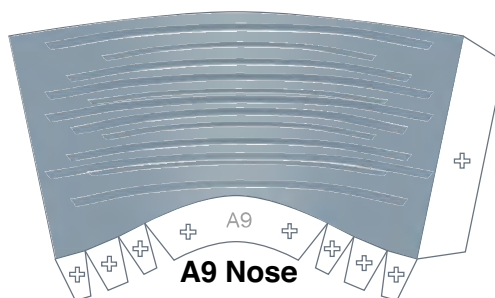
A7 Nose



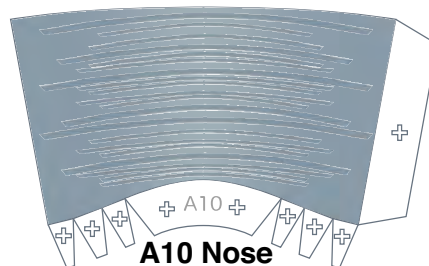
A8 Nose



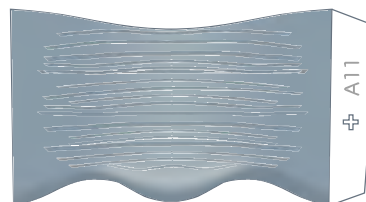
A9 Nose



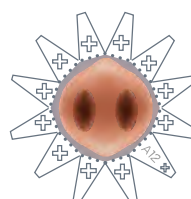
A10 Nose



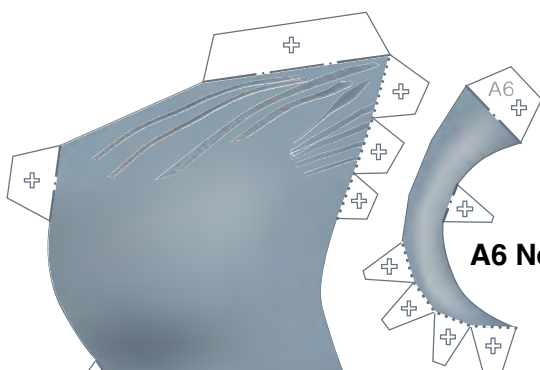
A11 Nose



A12 Nose



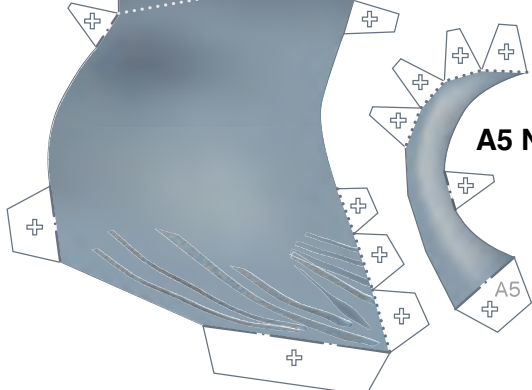
A6 Nose



A4 Nose



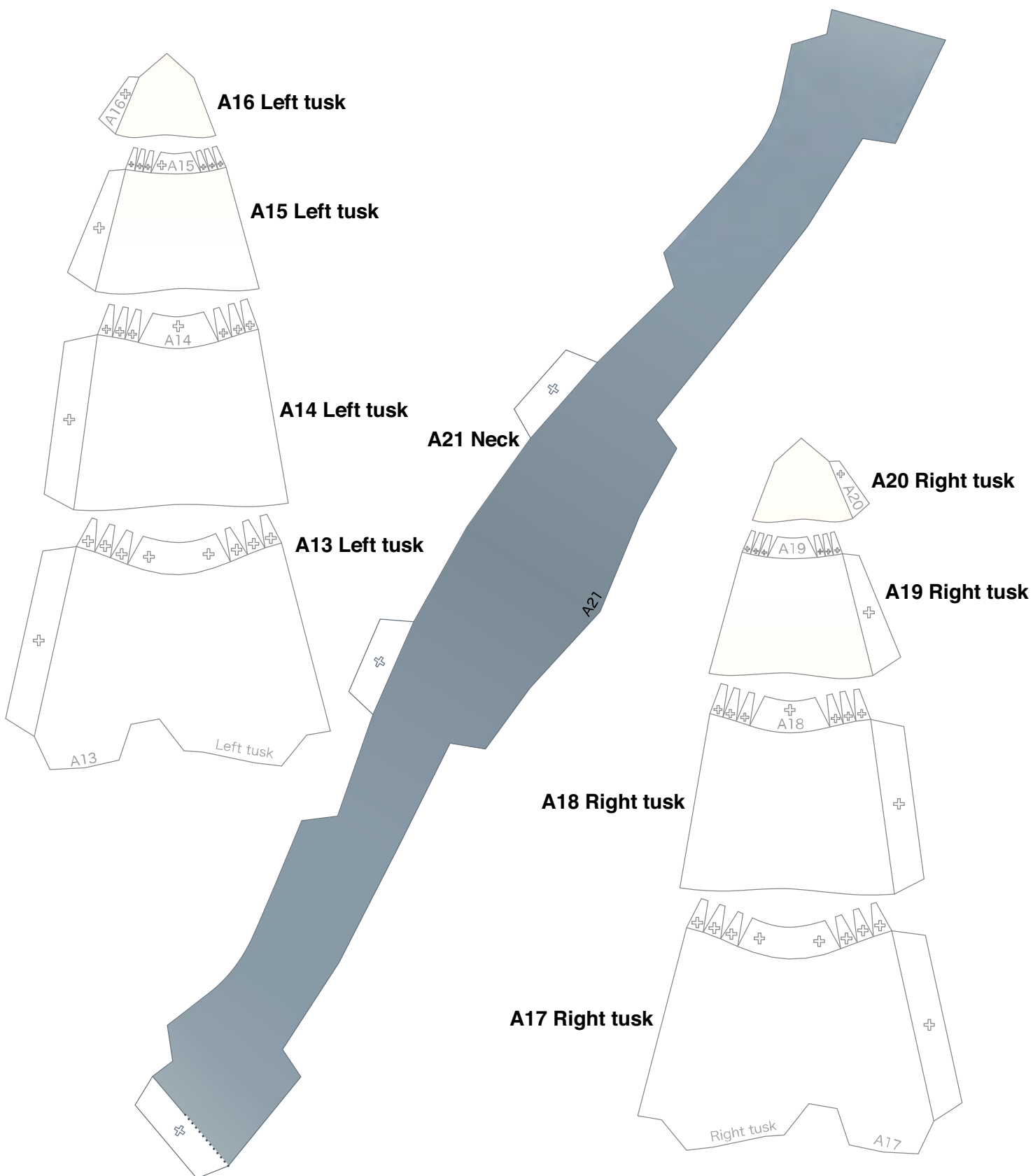
A5 Nose





Head parts

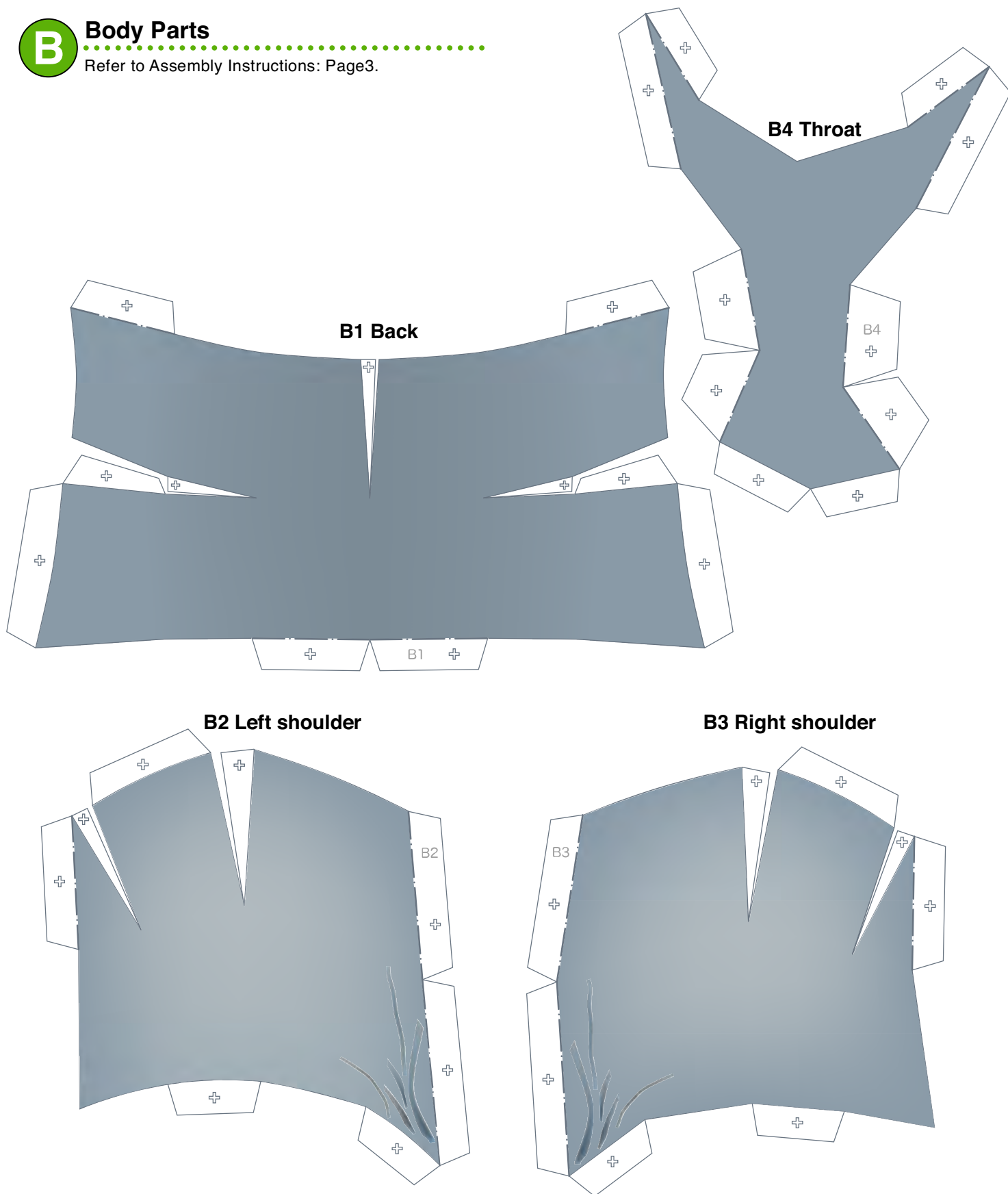
Refer to Assembly Instructions: Page2.



B

Body Parts

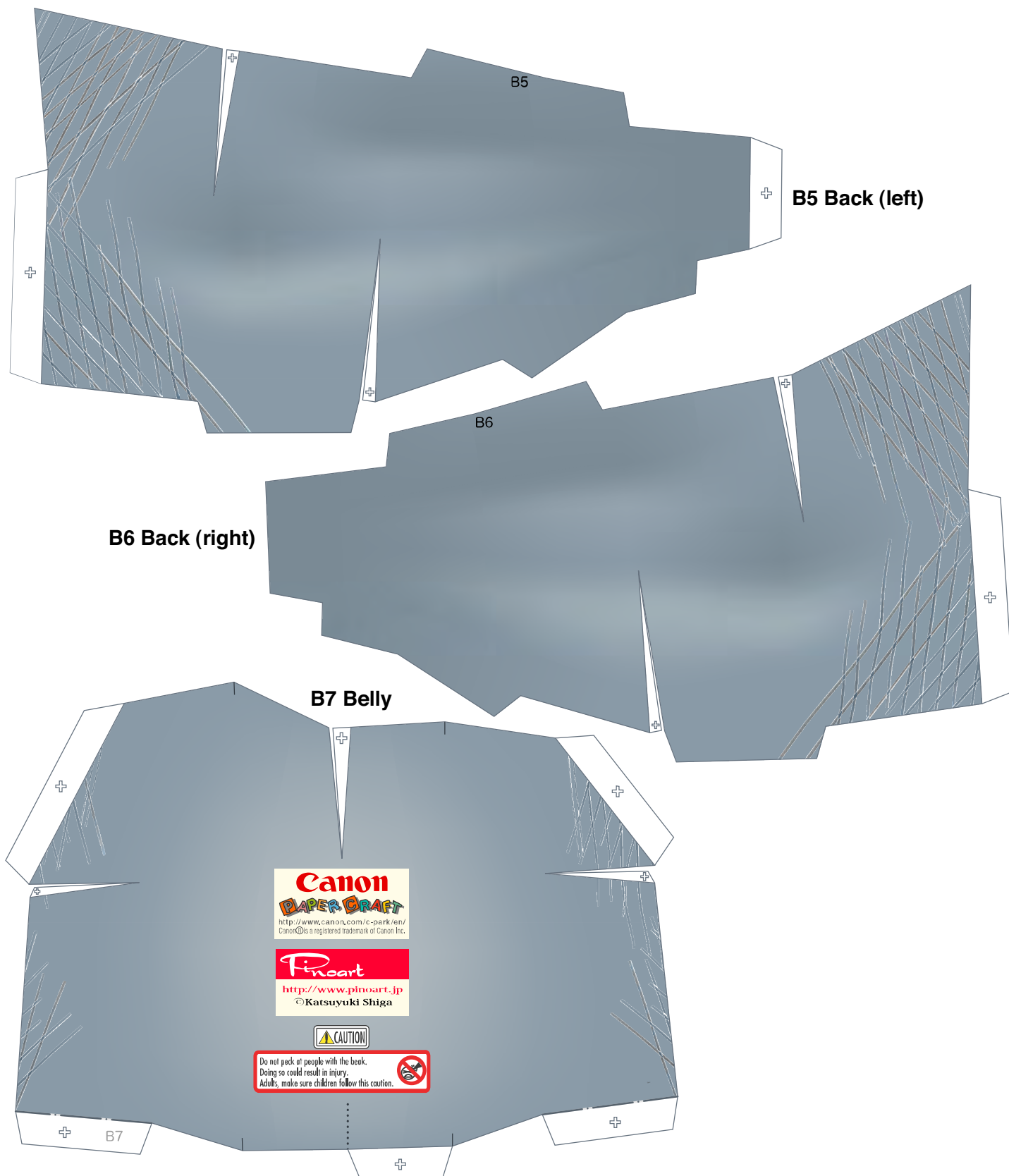
Refer to Assembly Instructions: Page3.



B

Body Parts

Refer to Assembly Instructions: Page3.

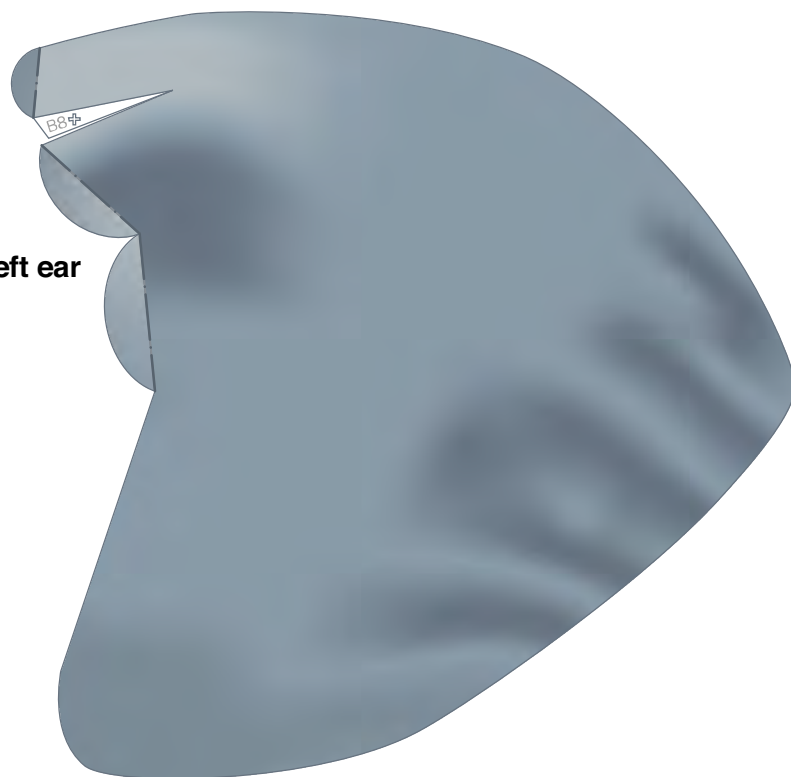




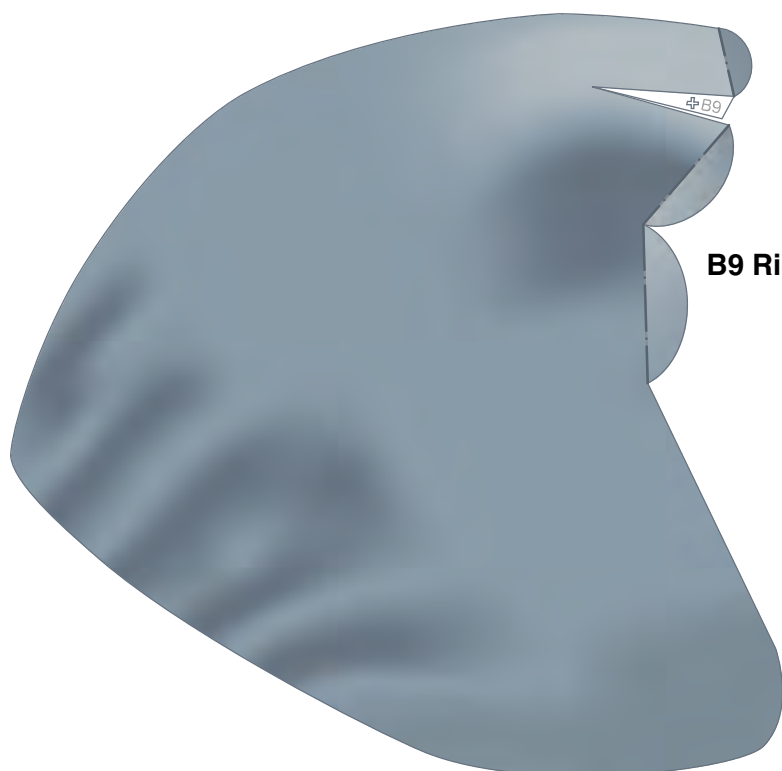
Body Parts

Refer to Assembly Instructions: Page3.

B8 Left ear



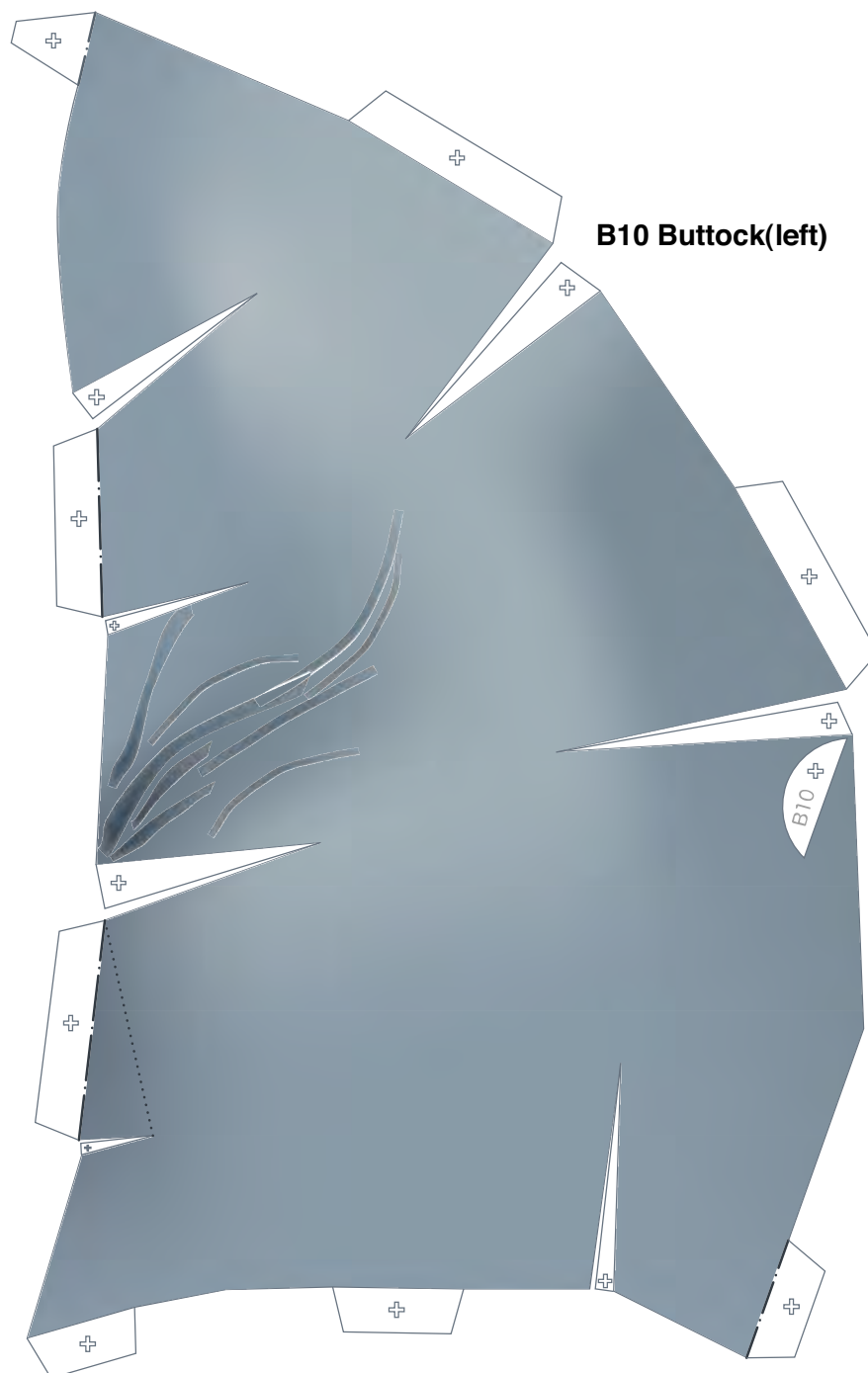
B9 Right ear



B

Body Parts

Refer to Assembly Instructions: Page3.

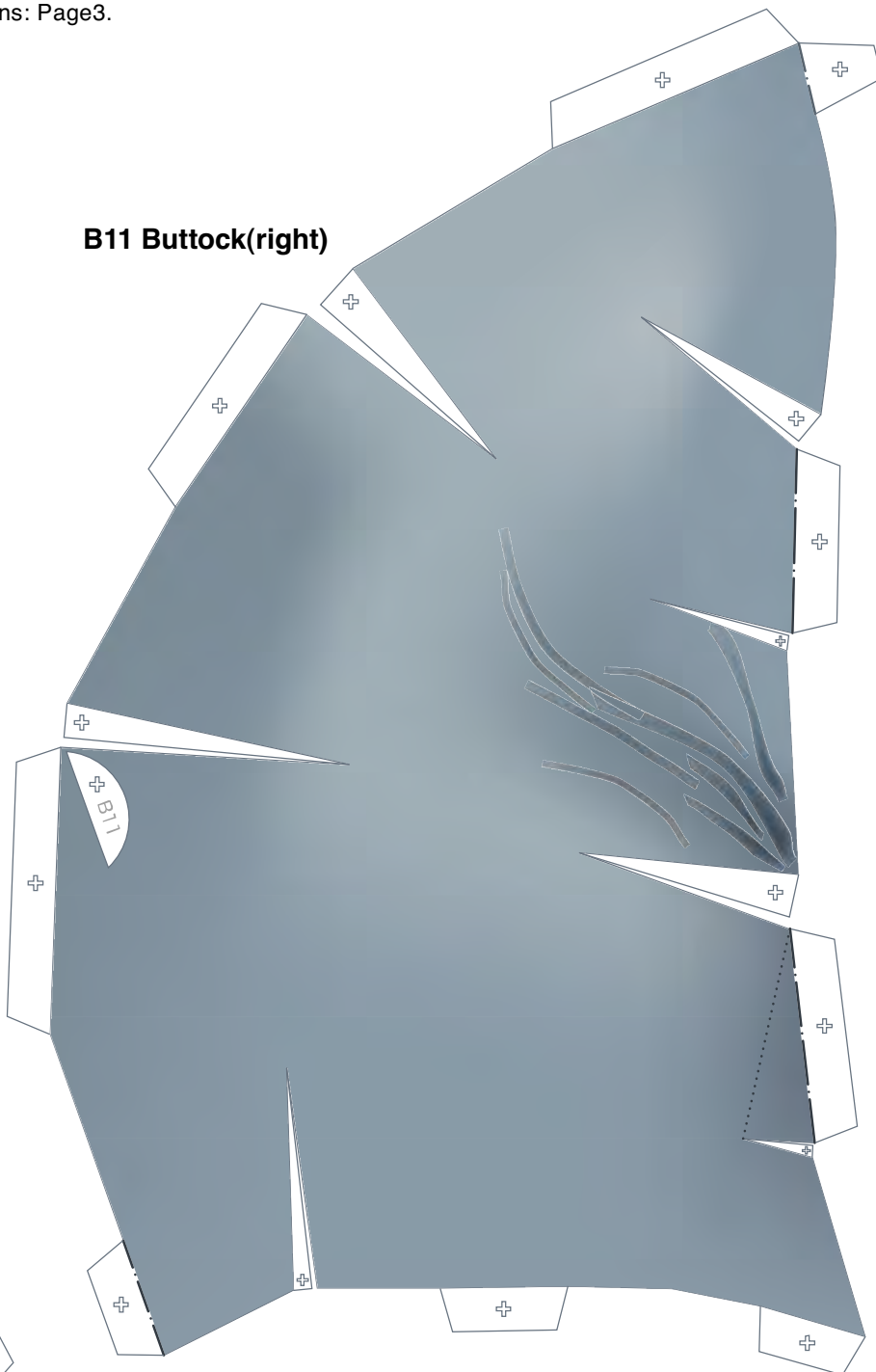




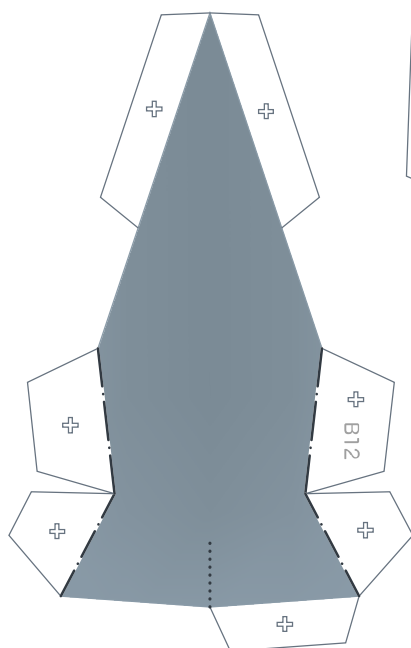
Body Parts

Refer to Assembly Instructions: Page3.

B11 Buttock(right)



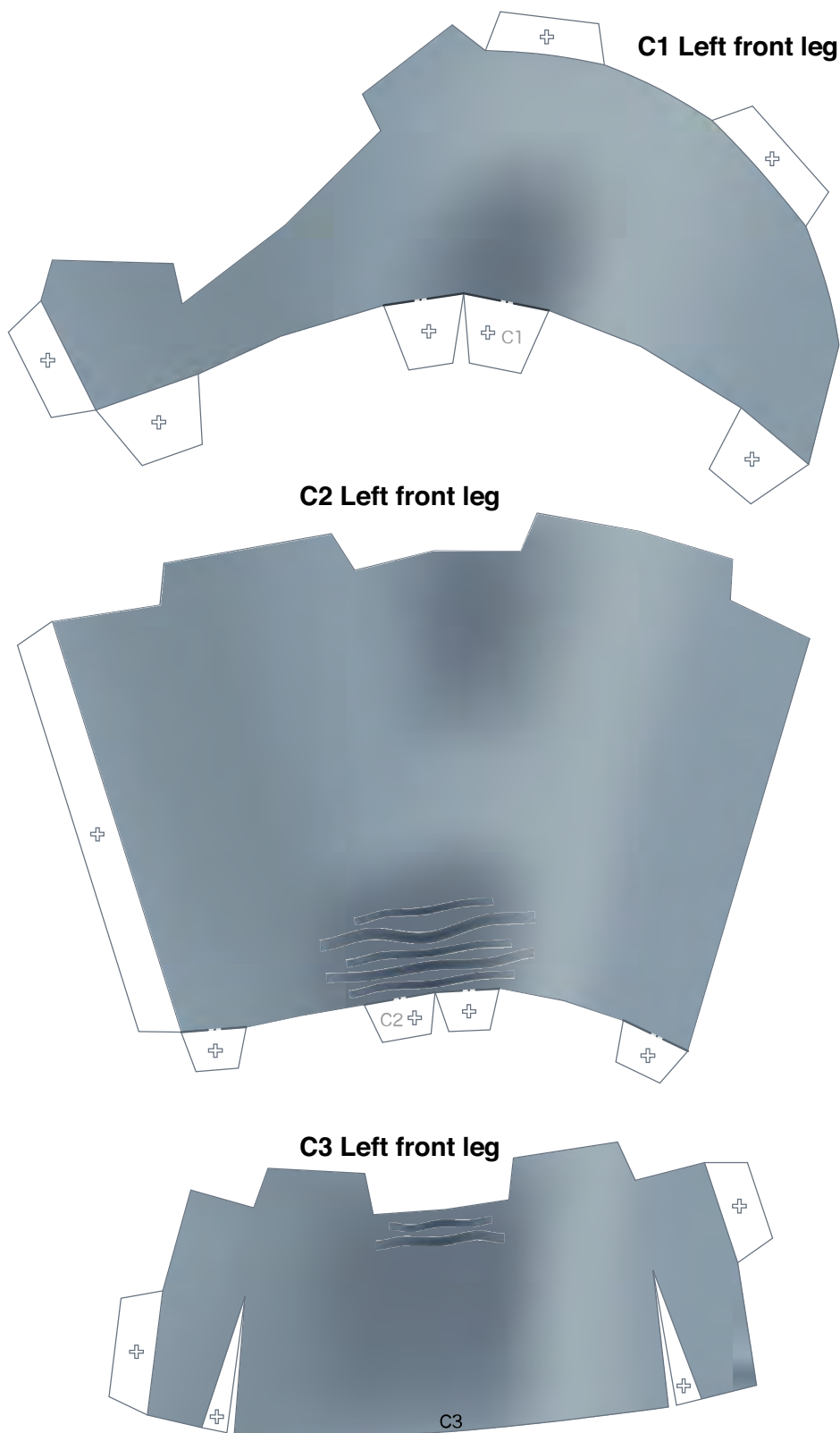
B12 Buttock





Leg parts

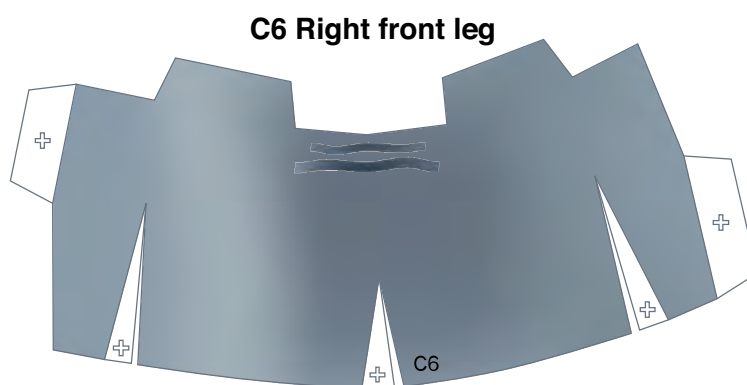
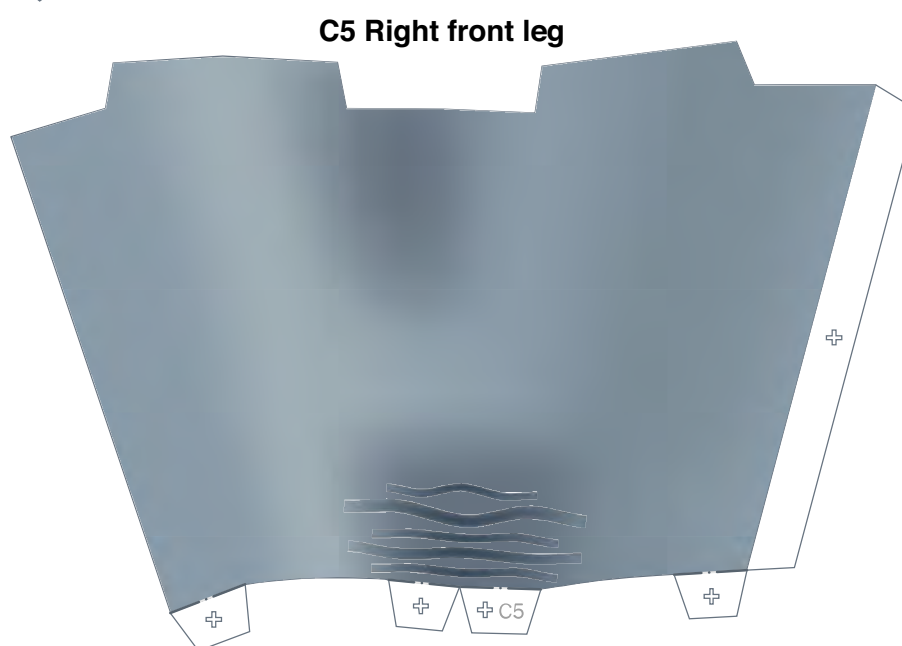
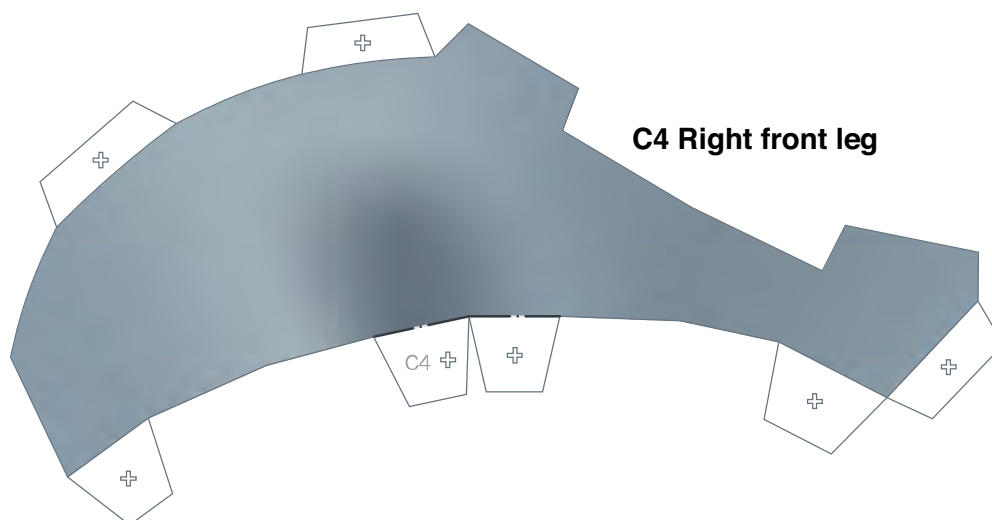
Refer to Assembly Instructions: Page3 / Page4.





Leg parts

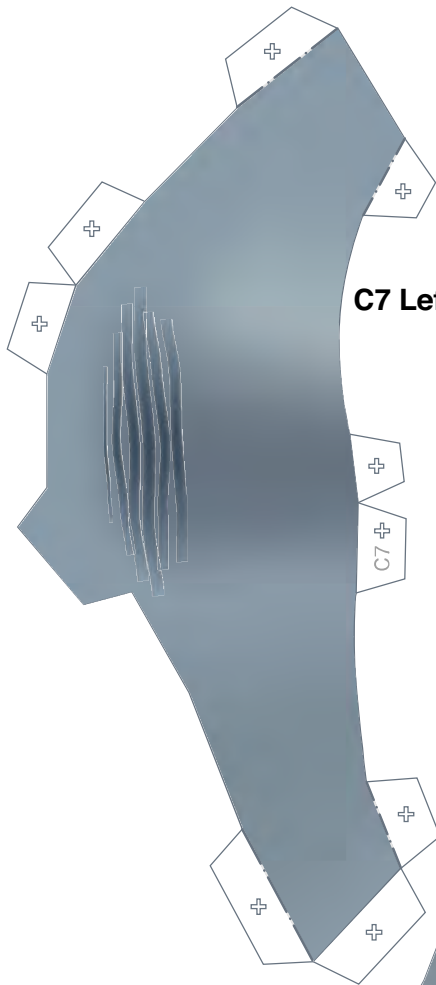
Refer to Assembly Instructions: Page3 / Page4.





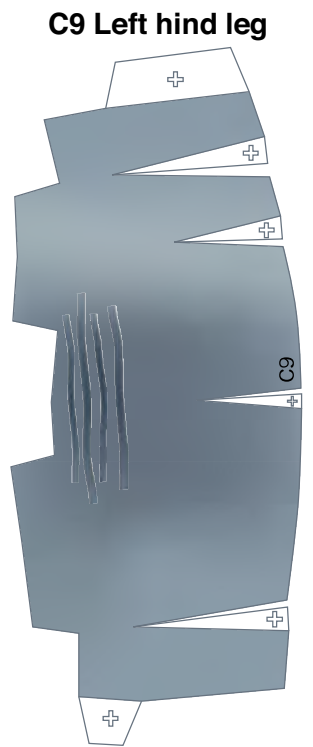
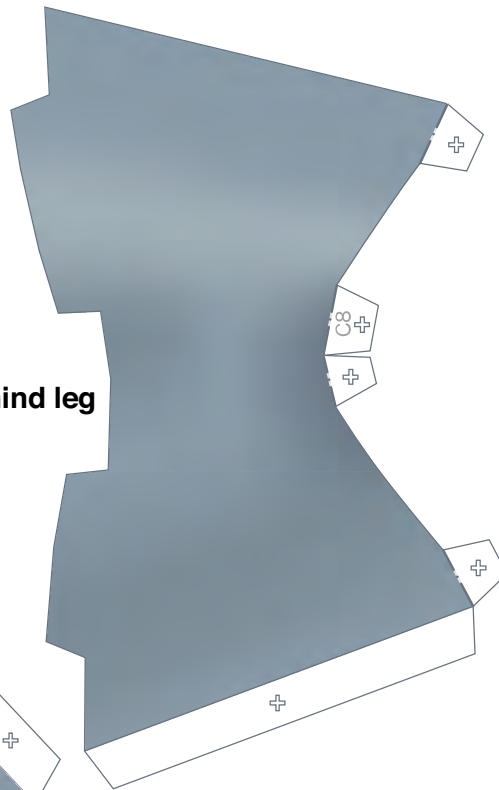
Leg parts

Refer to Assembly Instructions: Page4.



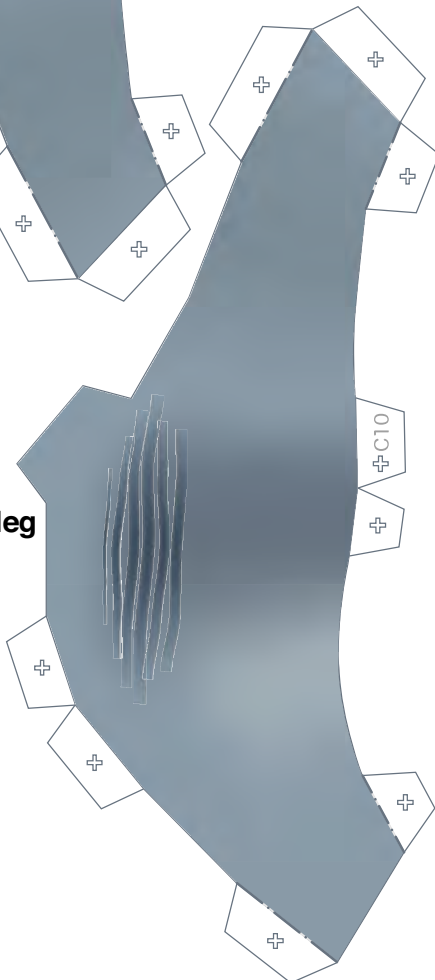
C7 Left hind leg

C8 Left hind leg

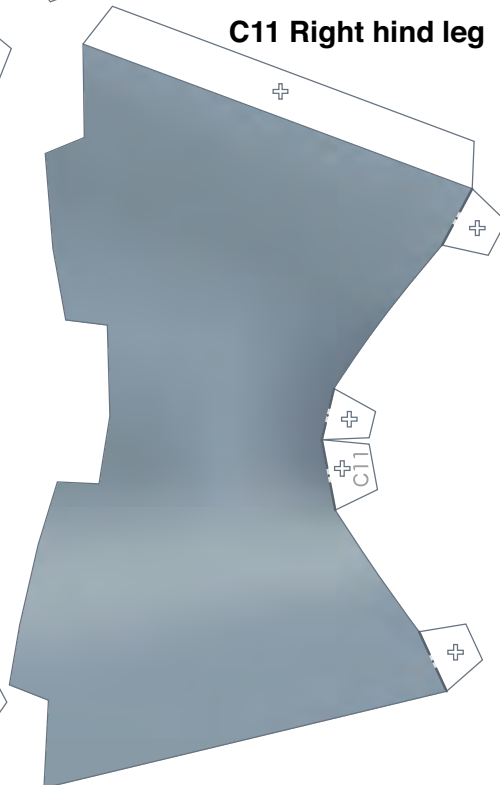


C9 Left hind leg

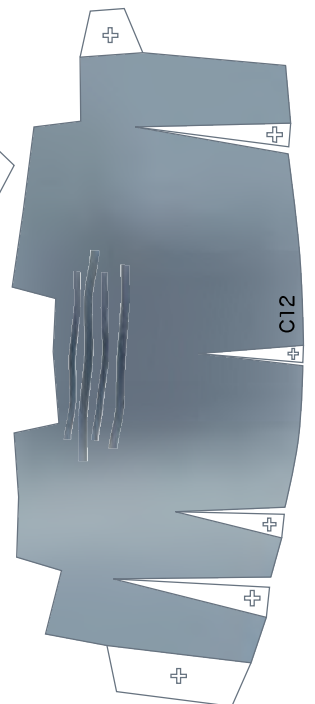
C10 Right hind leg



C11 Right hind leg



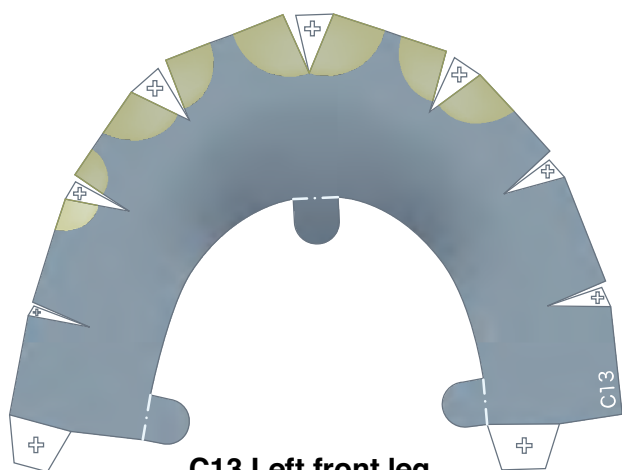
C12 Right hind leg



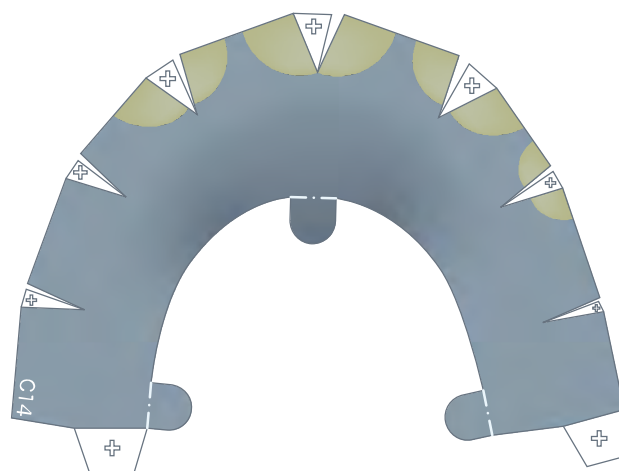


Leg parts

Refer to Assembly Instructions: Page4.

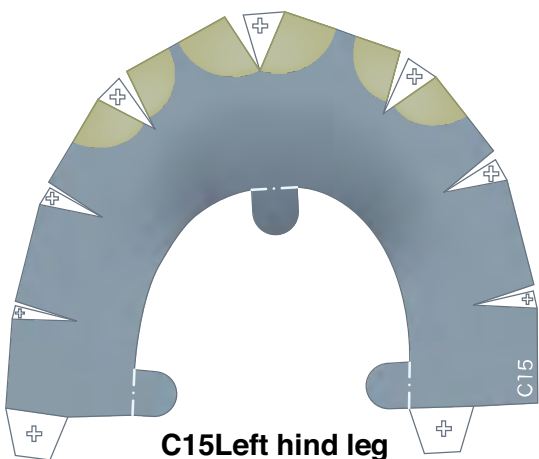
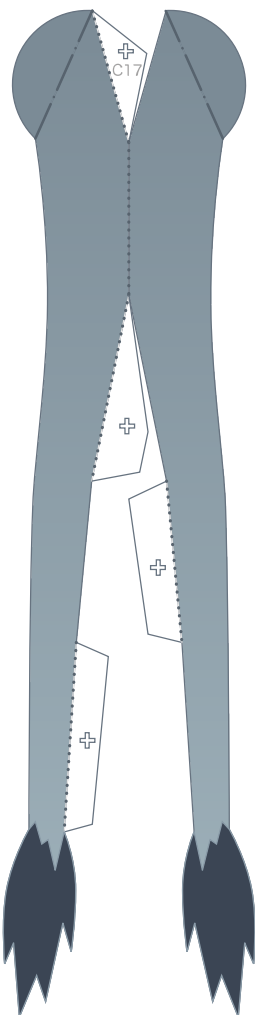


C13 Left front leg

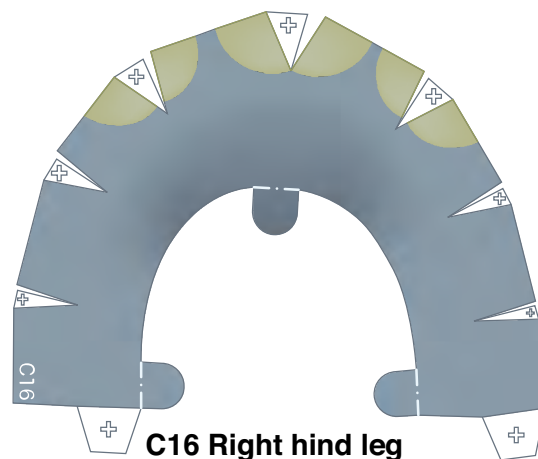


C14 Right front leg

C17 Tail



C15 Left hind leg



C16 Right hind leg